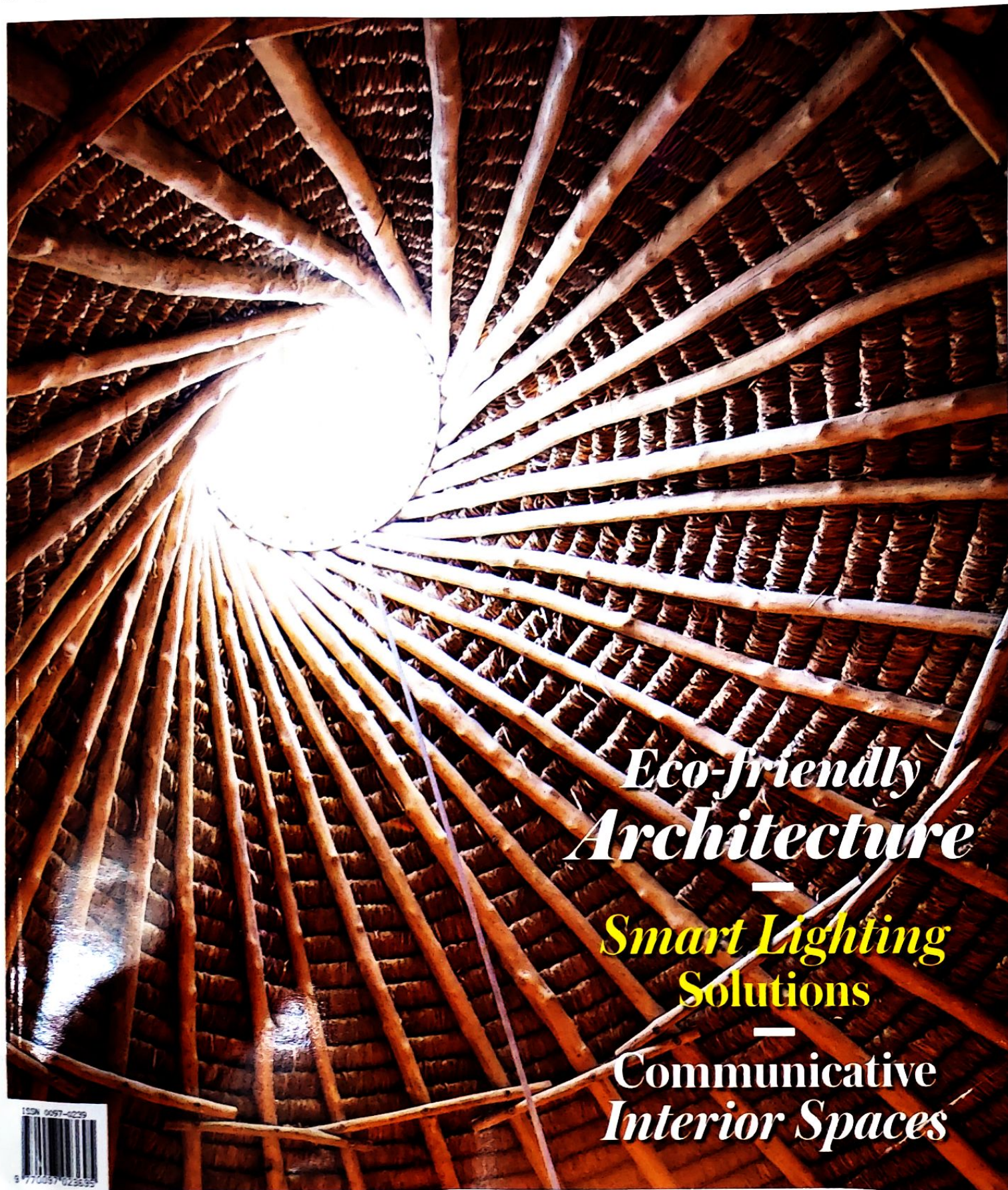


ARCHITECTURE+DESIGN

A N I N D I A N J O U R N A L O F A R C H I T E C T U R E



*Eco-friendly
Architecture*

*Smart Lighting
Solutions*

*Communicative
Interior Spaces*

ISSN 0097-0239

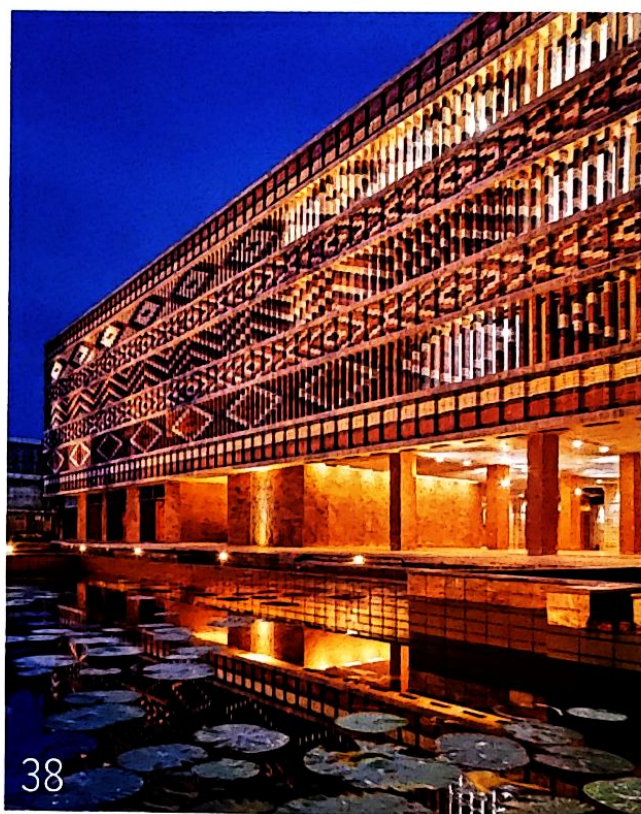


9 770097 023935

CONTENTS

— ARCHITECTURE+DESIGN —

VOL. XXXVII NO. 12 ■ DECEMBER 2020



05 ABOUT THE ISSUE

06 REFLECTIONS

07 UPDATES

VIEWPOINTS

- 10 **Air Syndrome in Post-Covid-19 Capacity Buildings**
Prof. Charanjit Singh Shah

- 16 **Rethinking Conservation of India's Unprotected Urban Heritage—Learnings from Practice**
Ar. Urvashi Srivastava

ECO-FRIENDLY ARCHITECTURE

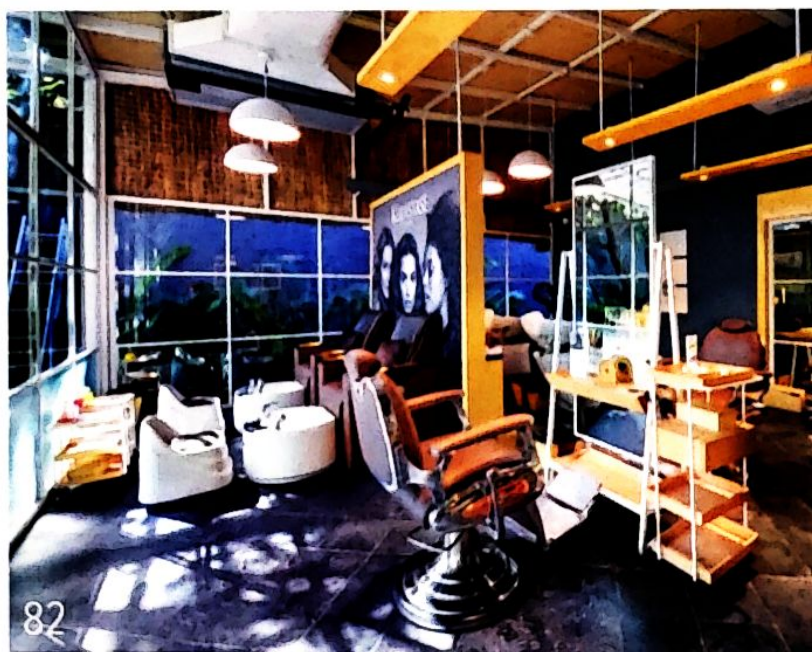
- 26 **A sustainable future for Healthcare design**
Ar. Rahul Kadri

- 32 **A Demonstration of Circular Sustainability**
Green Solution House, Denmark
3XN Team, Denmark

- 38 **Re-imagining the relationship between the State and its People**
Krushi Bhawan, Bhubaneswar
Studio Lotus, New Delhi

- 46 **A True Reflection of the Landscape**
'MAUSAM'- The House of Seasons, Kerala
Zero Studio, Kerala

- 52 **Sustainable energy through Art**
Power Wing, Thailand
Openbox Architects and Openbox Group, Thailand



58 **Contemporary panache and indispensable workplace wellness...**

Sangini House, Surat
Urbanscape Architects, New Delhi

64 **Play of Sciography**

Design Studio, Nashik, Maharashtra
Synectics Architects, Nashik, Maharashtra

70 **An Organic Structure**

Waldorf School Casa de las Estrellas, Playa Garza, Nosara, Costa Rica
Salagnac Arquitectos, Costa Rica

EXPLORING DESIGN

78 **Smart Lighting Solutions**

COMMUNICATIVE INTERIOR SPACES

82 **The Outside-Inside Link**

Enrich Salon, Bengaluru
Group DCA, New Delhi

88 **Retaining Industrial Aesthetics**

Corporate Office of Motherland Joint Ventures, Gurgaon
Architecture Discipline, New Delhi

PROJECT FEATURES

92 **Celebrating Cultural Heritage**

Swabhumi, Kolkata
Salient Design Studio, West Bengal

98 **VERSATILE PRODUCTS**