

Inside Outside

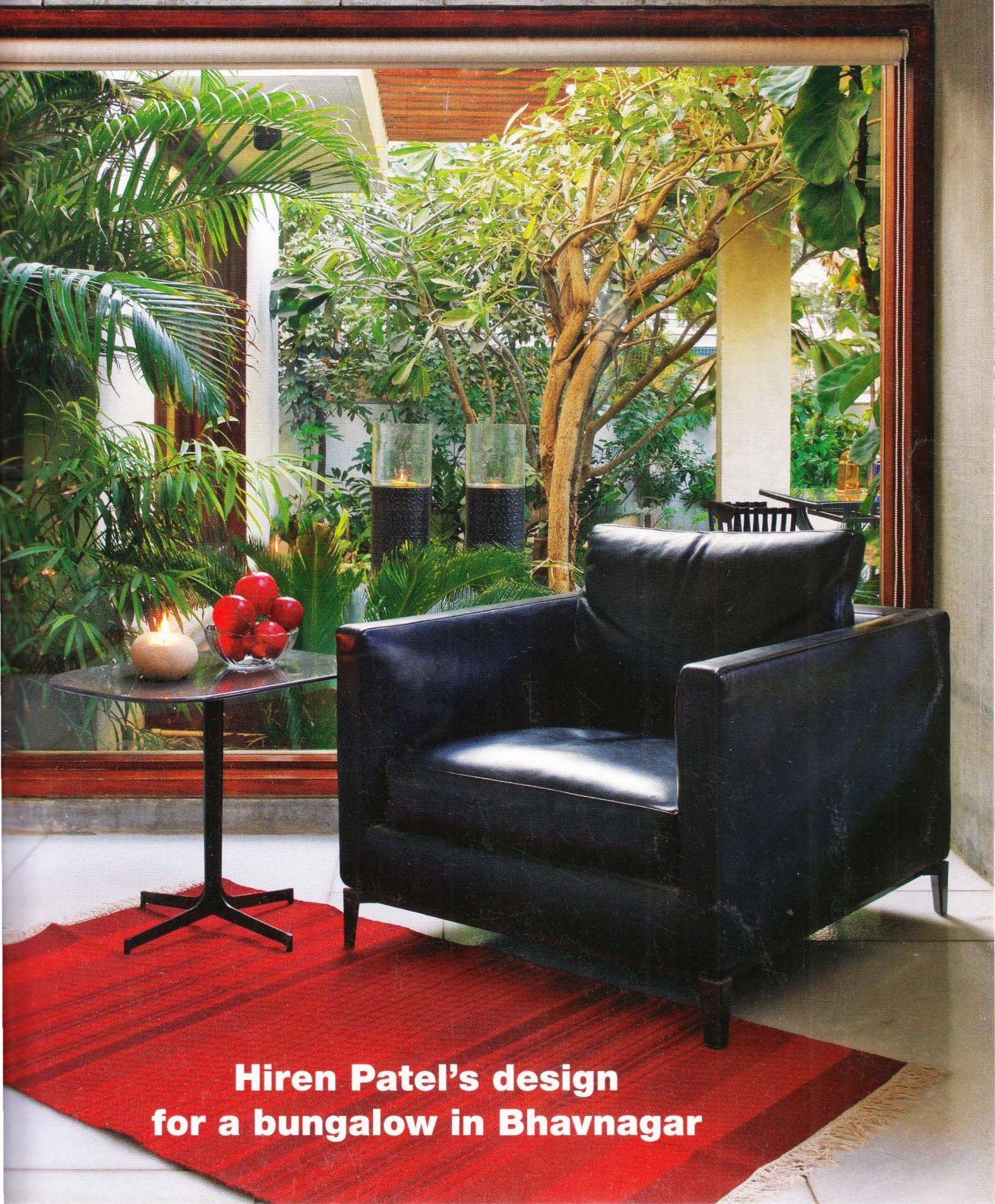
DESIGN MAGAZINE

www.insideoutside.in

ISSUE 369

MAY 2016

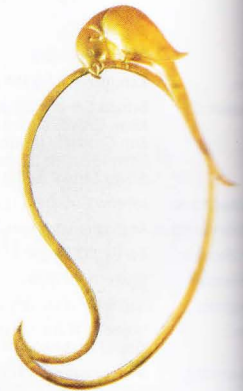
₹100



**Hiren Patel's design
for a bungalow in Bhavnagar**



content



- 17 Publisher's Letter
- 22 Retail Therapy
- 34 Carpets
- 36 Lights
- 134 Snippets
- 138 Access Point
- 140 Advertisers' Directory

42 BUNGALOW A GENERATION LATER...

The second generation of a design savvy family gives one very unusual brief to Hiren Patel: they want his design of their home to be worthy of being featured by 'Inside Outside' magazine. Equal to the task, the architect has created this gem for them in Bhavnagar, Gujarat, in his signature sensitive aesthetic.

Text: Devyani Jayakar Photographs: Darshak Shah

58 ARCHITECT'S AMBIENCE TELLING CHOICES

Using an earthy material palette, the principal architect of Amoeba Design Studio, Pune, have crafted a three-bedroom apartment for themselves, elevating the humble materials by the quality of the workmanship.

Text: Devyani Jayakar Photographs: Hemant Patil

66 SHOWFLAT AN UNDERSTATED LUXURY

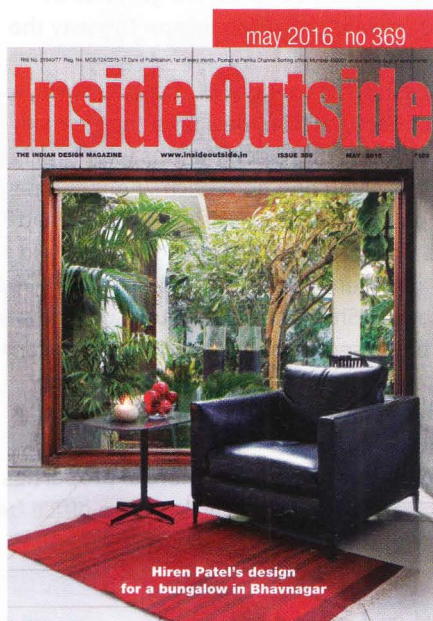
Using an unusual vocabulary, Rooshad Shroff designs a show flat for Oberoi Realty in Mumbai, moving away from the in-your-face typology of most projects of this kind. Subtle, understated, it is design that rules, as brands take the backseat, finds Devyani Jayakar.

Photographs: Sebastian Zachariah

74 RESIDENCE A PERFECT CONTINUUM

Architect Debashish Majumdar designs a home in Ghaziabad for three generations where the life-tree grows and prospers – each on its own branch.

Text: Courtesy Masque Photographs: Hari Kiran Agnur



COVER PHOTOGRAPH: DARSHAK SHAH



66

o center



86

86 RESIDENCE THE PERFORATED CUBE HOUSE

This award-winning house in Aurangabad, designed by Alkesh Gangwal & Associates, is a modern and minimalist dwelling.

Photographs: Sebastian Zachariah



98

98 INTERIOR DESIGNER HOME

Shivani Sanghani's contemporary style has influenced her design of a home in Vadodra.

Photographs: Sebastian Zachariah

108 INTERNATIONAL CASCADING POETRY HOLDS CENTRESTAGE!

Sheela Levy and her daughter Shaana chose a monochromatic theme for the Notting Hill apartment, focusing on the central three-storey stairwell wrapped around cascading white pieces forming a poetic installation by Paul Cocksedge.

Text: Amita Sarwal

Photographs: Caz Wray, Aranka Israni and Natxo Bassola

118 OFFICE [24]7 NO KIDDING

An office that literally runs round the clock. This 23,000 sq ft office of [24]7 in Bengaluru has been designed by Raj Consultants to reflect the creativity required in the client's line of business...and then some!

Text: Devyani Jayakar Photographs: Prashant Bhat

125 CLINIC CONCEPTUALLY CHIC

Workshop Inc. and KSA Design Planning Services Pvt. Ltd, efficiently work in tandem to design the versatile 'Advanced Diabetes Centre' in Surat (Gujarat). The space brings into light an offbeat approach adopted by the designers to lend new dynamics to contemporary healthcare design.

Text: Kanupriya Garg, with inputs from the designers
Photographs: Kunal Bhatia



118