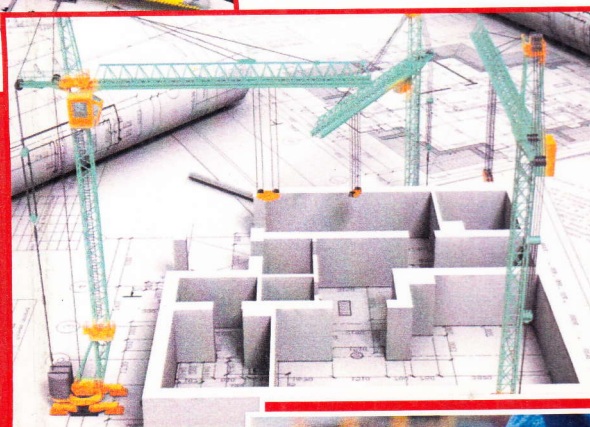


Journal of Construction Engineering Technology & Management

SJIF: 4.404



STM JOURNALS

Research Technical Medical

www.stmjournals.com

Contents

<i>Exploring Building Information Modeling</i> R.S. Patil, S.P. Nirkhe	1
<i>Optimum location of shear wall with plan Irregularity of Multistoried structure for Wind Analysis Using E-Tab</i> Akash S. Waghmode, A.P. Wadekar, D.N. Kakade	7
<i>Utilization of Pond Ash as a Partial Replacement of Fine Aggregate Using Alccofine in Conventional Concrete</i> Dheeraj Pratap Singh, Bibha Mahto	12
<i>Risk Assessment in Indian Construction Projects Using Modified Fuzzy Analytic Hierarchy Process</i> C. Sadhana, S. Shanmugapriya	17
<i>Survey Study on Environment Impact Assessment in Construction: A Review</i> Anant Singh, Ramesh M.	27
<i>A Review of Ecofriendly Bricks by Using Fly Ash</i> Pravin P. Gadling, M.B. Varma	35
<i>Effect of Construction Load on RC Floor Slab</i> M.V. Bhatti, R.S. Londhe	41
<i>Reviewing Some Properties of Concrete Containing Recycled Concrete Aggregates</i> Kanish Kapoor, Irmandeep Singh	50
<i>Development of Structural Health and Damage Assessment Chart of a Building</i> Nikita S. Naik, P.M. Alandkar	63