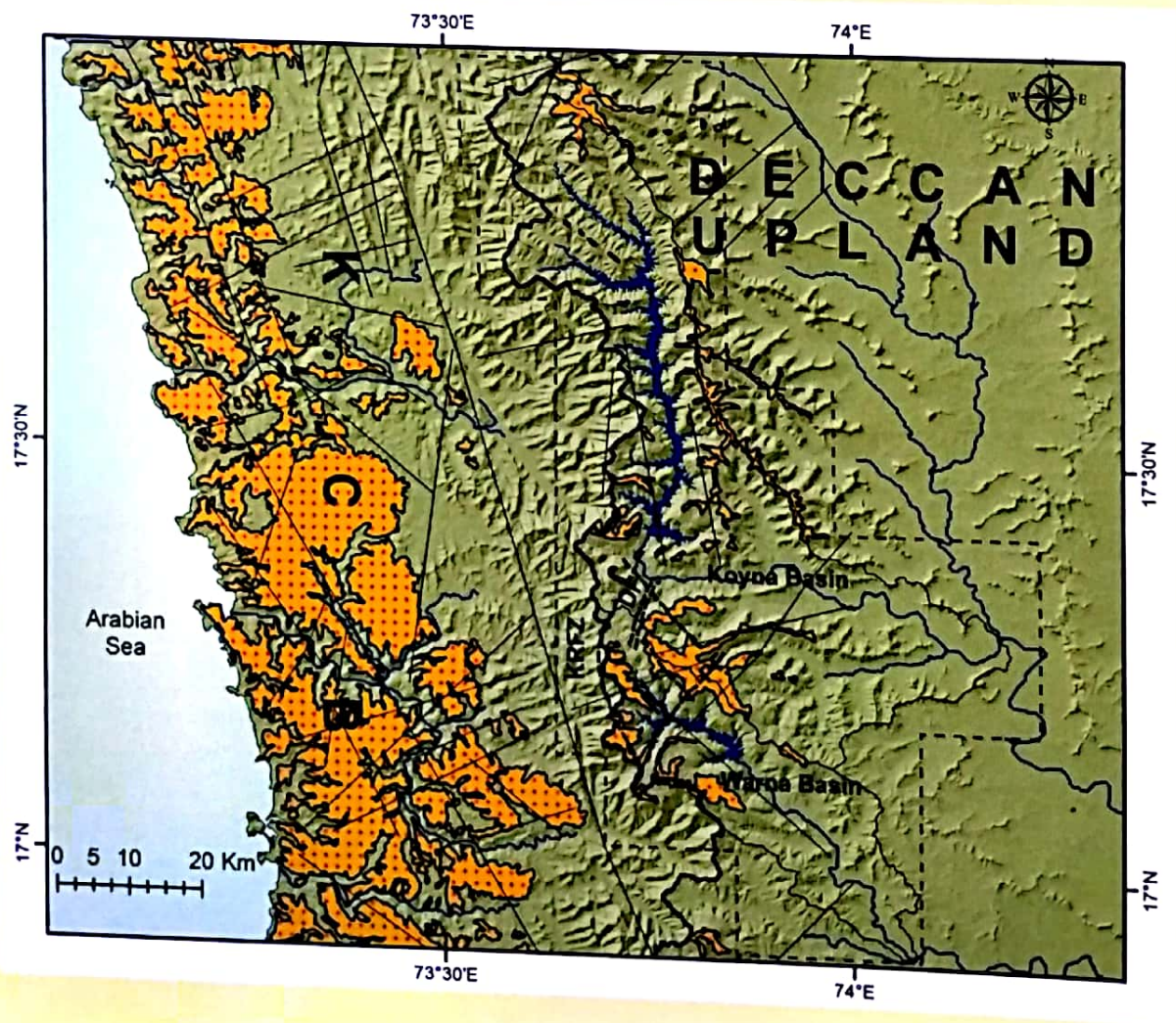


Journal of The Geological Society of India

Vol.96

SEPTEMBER 2020

No.3



JOURNAL of THE GEOLOGICAL SOCIETY OF INDIA

(Abstracted/Indexed in AGI's Bibliography and Index of Geology, Chemical Abstracts, Current Contents, GEOBASE, GEOref, Mineralogical Abstracts, GeoArchive, Thomson ISI database (SCIE, CC/PC & ES))

Vol. 96

SEPTEMBER 2020

No. 3

CONTENTS

Science for Earthquake Risk Reduction.

ALIK ISMAIL-ZADEH 213

RESEARCH ARTICLES

Koyna-Warna Shallow Seismic Region, India: Is there Any Geomorphic Expression of Active Tectonics?

SUMIT DAS 217

Iso-dip Contouring: An Innovative Approach to Exploration for Concealed, Structure- controlled, Hydrothermal, Vein-type Uranium Mineralisation in Kanchankayi Sector of Kurlagere-Gogi-Gundanahalli Fault Zone, Yadgir District, Karnataka.

DEBASISH ROY, DHEERAJ PANDE, K CHAKRABARTI, S.K. VARUGHESE, A. K. PRADHAN, B. SARAVANAN, A.K. BHATT and M.B. VERMA 232

Gravity of Dharwar Craton, Southern Indian Shield.

J.V. RAMA RAO, B. RAVI KUMAR, MANISH KUMAR, R.B. SINGH and B. VEERAI AH 239

Role of Energy Dispersive XRF (ED-XRF) in Development of Rare Earth Element-2, International Certified Standard Reference Material: Ambiguities and Constraints.

P.V. SUNDER RAJU 250

Impact of Land Use-Land Cover and Climatic Pattern on Sediment Yield of Two Contrasting Sub-Catchments in Upper Tapi Basin, India.

RESMI, S.R., P.L. PATEL and P.V. TIMBADIYA 253

Rock Mass Characterization for the Underground Surge Pool Cavern – A Case Study, India.

A.K. NAITHANI, PRASNNA JAIN, D.S. RAWAT and L.G. SINGH 265

Hydrogeochemical Assessment and Evaluation of Groundwater Quality in Selected Areas of Bishnupur District, Manipur.

WAZIR ALAM, YUMNAM GYANENDRA, RAJDEEP CHANDA, RANU JAJO LAISHRAM and NASHIMUN NESA 272

Changes in Morphometric Meander Parameters and Prediction of Meander Channel Migration for the Alluvial Part of the Barak River.

WAJAHAT ANNAYAT and BRITI SUNDAR SIL 279

Evaluation of Groundwater Vulnerability to Pollution using GIS Based DRASTIC Method in Koradi, India - A Case Study RAMESH JANIPPELLA, RAFAT QUAMAR, RAMYA SANAM, CHANDRAKANTH JANGAM, PANDURANG, BALWANT, VELIGETI JYOTHI, C. PADMAKAR and PARAS R. PUJARI	292
Missing Coal Seam between East and West Bokaro near Lugu Hill of Damodar Basin, India: A Geological Model SUGATA KUMAR SINHA and SAURABH DATTA GUPTA	298

DISCUSSION

Classification of the Paleoproterozoic Gulcheru Formation: Implications on Early Paleogeographic and Tectonic Evolution of the Cuddapah Basin, India. Comment: G. LAKSHMINARAYANA	308
Reply: TUASHA MAJUMDER and SARBANI PATRANABIS-DEB	308

NEWS AND NOTES

Rajamala Landslide: Continuation of a Never-ending Landslide Series. SAJIN KUMAR, K.S. and THOMAS OOMMEN	310
A Note on Vanadium Mineralisation in Daba Gamlin Area, West Siang District, Arunachal Pradesh. P.S. MISRA, A. KUMAR and A.K. SINGH	311
Geological Risk Uncertainty in Oil Exploration. T. K. CHOUDHURY	312

OBITUARY

C. Subrahmanyam (1945 –2020). T. GANGADHARA RAO, P. RAMA RAO and T.R.K. CHETTY	313
K. Krishnanunni (1941-2020). E.V.R. PARTHASARADHI	314
Prof. Barham Parkash (1941-2020). A.K. AWASTHI and G.M. BHATT	315

ANNOUNCEMENT 316

Cover

Simplified geological map of the study area and surrounding regions. Flood basalt and laterites are major lithology types in the study area. Major lineaments are shown by thin black lines. For details see pages 217-231

ADDRESS OF EDITOR

All papers intended for publication and also related correspondence should be addressed to:
B. Mahabaleswar, Editor, Geological Society of India, No.30 & 31, 1st Main, 3rd Cross,
Byrappa Garden, Kathriguppe Village, BSK 3rd Stage, Bengaluru - 560 085.
Email: editorjournalgsi@gmail.com; jgsi.journal@gmail.com; **Mobile:** 09341264052;
Telephone: 080-2672 3943; **Website:** <http://www.geosocindia.org>.