

Table of Contents - Current issue



October-December 2020

Volume 69 | Issue 4
Page Nos. 193-255

Online since Tuesday, December 29, 2020

Accessed 3,160 times.

PDF access policy

Journal allows immediate open access to content in HTML + PDF

 [View issue as eBook](#)

 [Issue statistics](#)

 [RSS](#)

[Show all abstracts](#) [Show selected abstracts](#) [Export selected to](#) ▼ [Add to my list](#)

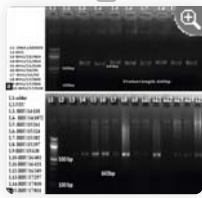
EDITORIAL

- Implementation of competency based medical education in anatomy with poor teacher-student ratio: The utopia** p. 193
 Vishram Singh, Ashok Sahai
 DOI:10.4103/JASI.JASI_246_20
[\[HTML Full text\]](#) [\[PDF\]](#) [\[Mobile Full text\]](#) [\[EPub\]](#) [\[Sword Plugin for Repository\]](#)^{Beta}

ORIGINAL ARTICLES

- A computed tomography angiography study to correlate main renal artery diameter with presence of accessory renal artery in healthy live kidney donors** p. 196
 Alka Nagar, Navbir Pasricha, Eti Sthapak, Deshraj Gurjar, Hira Lal
 DOI:10.4103/JASI.JASI_48_20
[\[ABSTRACT\]](#) [\[HTML Full text\]](#) [\[PDF\]](#) [\[Mobile Full text\]](#) [\[EPub\]](#) [\[Sword Plugin for Repository\]](#)^{Beta}
- Morphological side differences of the hemipelvis** p. 201
 Gloria Maria Hohenberger, Angelika Maria Schw arz, Andreas Heinrich Weiglein, Sabine Kuchling, Georg Hauer, Uldis Berzins, Magdalena Holter, Christoph Grechenig, Renate Krassnig, Axel Gänsslen
 DOI:10.4103/JASI.JASI_97_19
[\[ABSTRACT\]](#) [\[HTML Full text\]](#) [\[PDF\]](#) [\[Mobile Full text\]](#) [\[EPub\]](#) [\[Sword Plugin for Repository\]](#)^{Beta}
- The morphological variants of dural venous sinuses** p. 207
 Sercan Ozkacmaz, Yeliz Dadali, Muhammed Alpaslan, Ilyas Uçar
 DOI:10.4103/JASI.JASI_112_19
[\[ABSTRACT\]](#) [\[HTML Full text\]](#) [\[PDF\]](#) [\[Mobile Full text\]](#) [\[EPub\]](#) [\[Sword Plugin for Repository\]](#)^{Beta}
- An evaluation on the morphology of the nasal bone, piriform aperture, and choana on dry skulls** p. 213
 Anil Didem Aydin Kabakci, Duygu Akin Saygin, Şerife Alpa, Mustafa Buyukmumcu, Mehmet Tugrul Yilmaz
 DOI:10.4103/JASI.JASI_6_20
[\[ABSTRACT\]](#) [\[HTML Full text\]](#) [\[PDF\]](#) [\[Mobile Full text\]](#) [\[EPub\]](#) [\[Sword Plugin for Repository\]](#)^{Beta}
- Morphological and morphometric study of the acetabulum of dry human hip bone and its clinical implication in hip arthroplasty** p. 220
 Archana Singh, Rakesh Gupta, Arun Singh
 DOI:10.4103/JASI.JASI_214_19
[\[ABSTRACT\]](#) [\[HTML Full text\]](#) [\[PDF\]](#) [\[Mobile Full text\]](#) [\[EPub\]](#) [\[Sword Plugin for Repository\]](#)^{Beta}

- POPULAR ARTICLES
- JOIN AS REVIEWER
- GET EMAIL ALERTS
- RECOMMEND



Barkha Singh, Prasenjit Bose, SN Shamal, Deepika Joshi, Royana Singh

DOI:10.4103/JASI.JASI_107_19

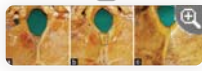
[\[ABSTRACT\]](#) [\[HTML Full text\]](#) [\[PDF\]](#) [\[Mobile Full text\]](#) [\[EPub\]](#) [\[Sword Plugin for Repository\]](#)^{Beta}

An anatomical description of the vermian fossa: The reappraisal of an overlooked entity

 p. 233

Jeshika S Luckrajh, J Naidoo, L Lazarus

DOI:10.4103/JASI.JASI_131_19

[\[ABSTRACT\]](#) [\[HTML Full text\]](#) [\[PDF\]](#) [\[Mobile Full text\]](#) [\[EPub\]](#) [\[Sword Plugin for Repository\]](#)^{Beta}


Considering the surface area and sagittal angle in a pair of lumbosacral facets: Determining the structural relevance of asymmetric facets at the lumbosacral junction

 p. 237

Uchenna Kenneth Ezemagu, F Chinedu Akpuaka, Emmanuel C Iyidobi, Chike P Anibeze

DOI:10.4103/JASI.JASI_53_19

[\[ABSTRACT\]](#) [\[HTML Full text\]](#) [\[PDF\]](#) [\[Mobile Full text\]](#) [\[EPub\]](#) [\[Sword Plugin for Repository\]](#)^{Beta}


In vivo cross-sectional topographic anatomy at sternal angle on magnetic resonance imaging

 p. 243

Rohit Aggarwal, Sreedhar Muthukrishnan Calicut, Raheem Abdul Sheik, Vijaya Sagar Theegala, Indrani Mukhopadhyay

DOI:10.4103/JASI.JASI_85_20

[\[ABSTRACT\]](#) [\[HTML Full text\]](#) [\[PDF\]](#) [\[Mobile Full text\]](#) [\[EPub\]](#) [\[Sword Plugin for Repository\]](#)^{Beta}


CASE REPORTS



Ectopic pelvic kidney and its renal artery from the common iliac artery

 p. 249

Sevda Lafci Fahrioglu, Musa Muhtaroglu, Selda Onderoglu, Sezgin Ilgi

DOI:10.4103/JASI.JASI_210_19

[\[ABSTRACT\]](#) [\[HTML Full text\]](#) [\[PDF\]](#) [\[Mobile Full text\]](#) [\[EPub\]](#) [\[Sword Plugin for Repository\]](#)^{Beta}


Turner syndrome associated with cerebellar abnormalities

 p. 252

Tanya T Kitova, Ekaterina H Uchikova, Kristina P Kilova, Veselin T Belovejdov

DOI:10.4103/JASI.JASI_50_19

[\[ABSTRACT\]](#) [\[HTML Full text\]](#) [\[PDF\]](#) [\[Mobile Full text\]](#) [\[EPub\]](#) [\[Sword Plugin for Repository\]](#)^{Beta}
